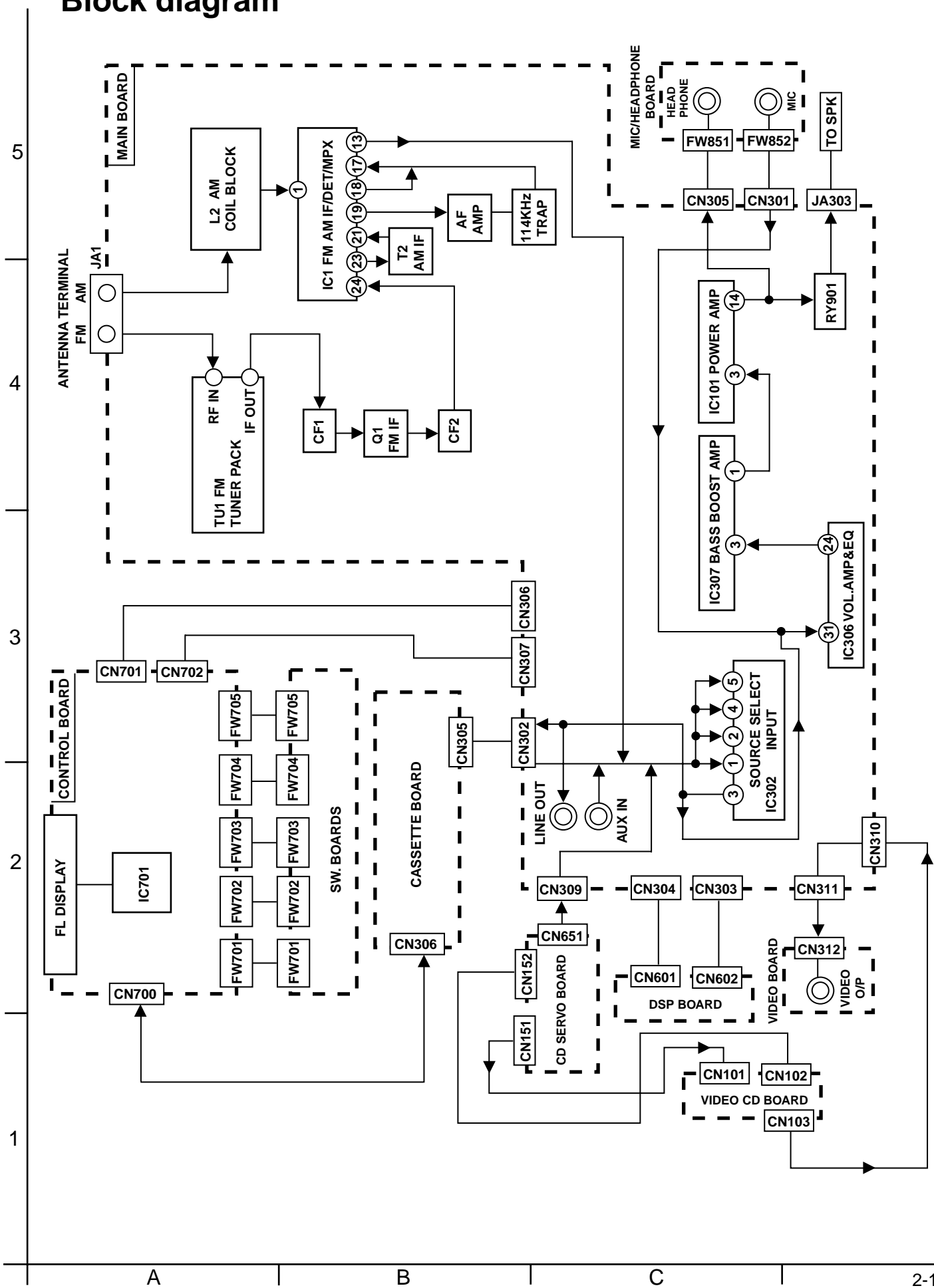


# Block diagram

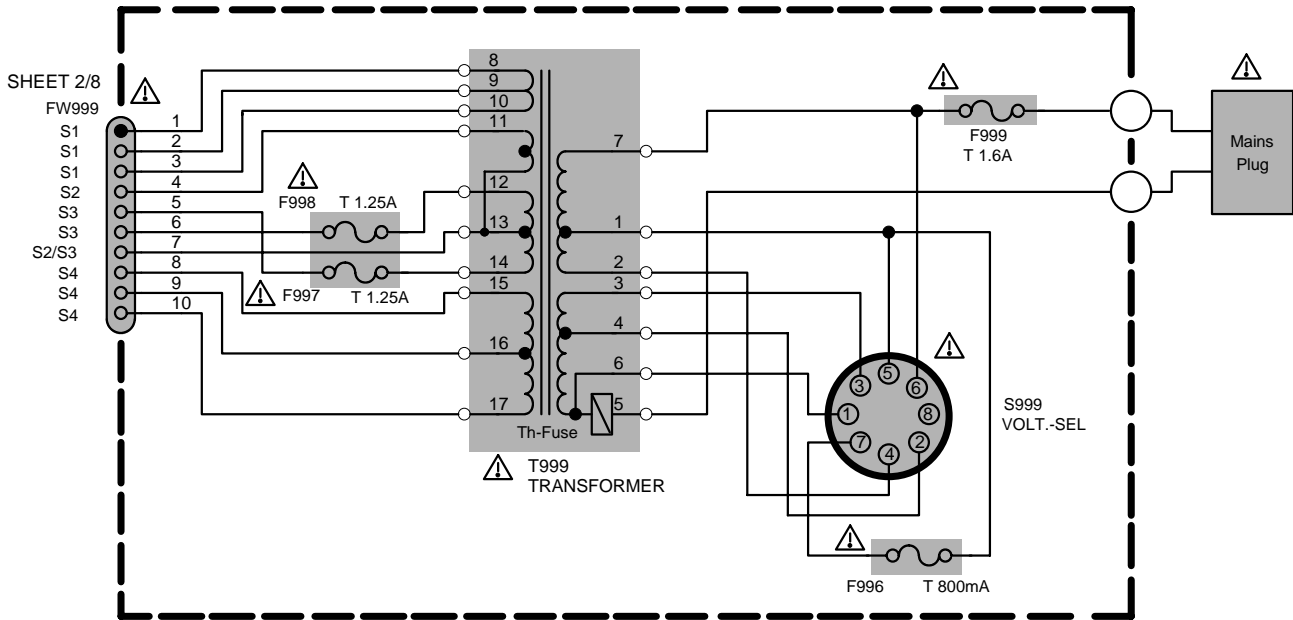


# Standard schematic diagrams

## Power supply section

Version:U/UX/US

AC 110V / 127V / 220V / 230-240V 50Hz/60Hz



AC110V



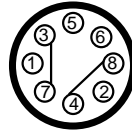
AC127V



AC220V



AC230-240V

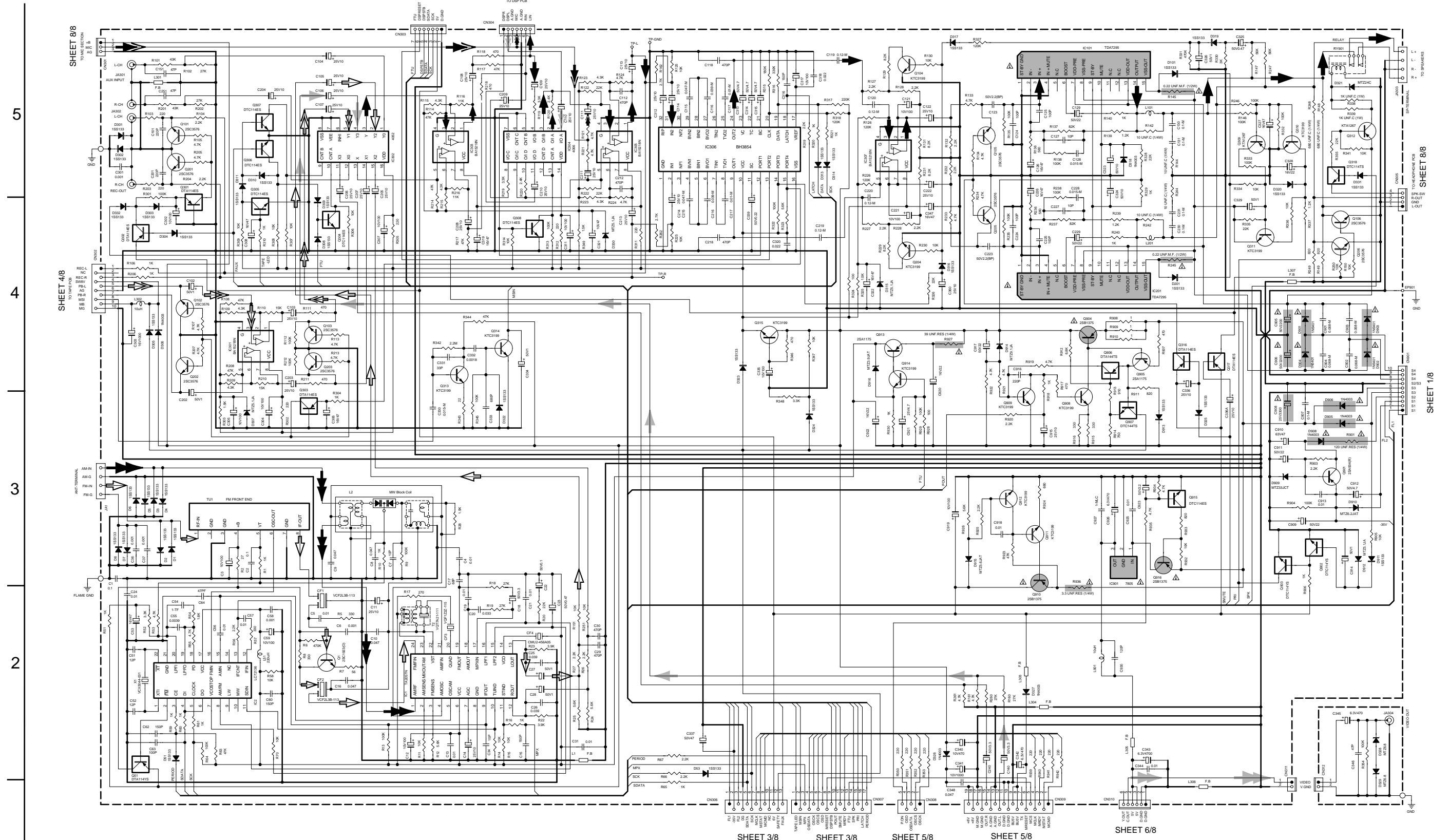


⚠ Parts are safety assurance parts. When replacing those parts make sure to use the specified.

Main section

SHEET 7/8

SHEET 7/8



5

4

3

2

1

A B C D E F G

⚠ Parts are safety assurance parts. When replacing those parts make sure to use the specified.

- CD/AUDIO signal
- FM/TUNER signal
- MAIN signal
- VIDEO/CD signal
- DSP signal
- TAPE P.B. signal
- MIC signal
- AM signal

SHEET 2/8

Control section

5

4

3

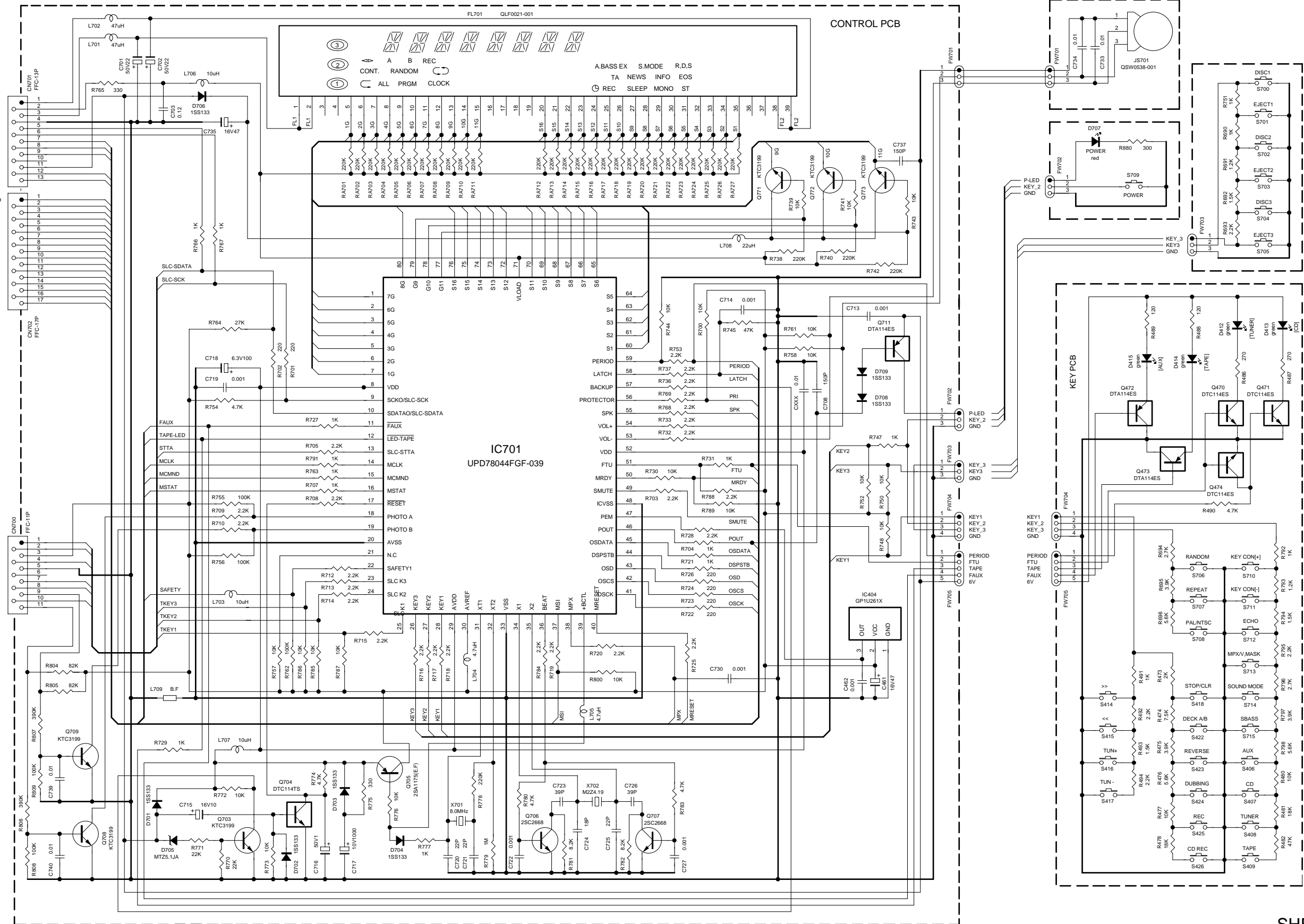
2

1

SHEET 2/8

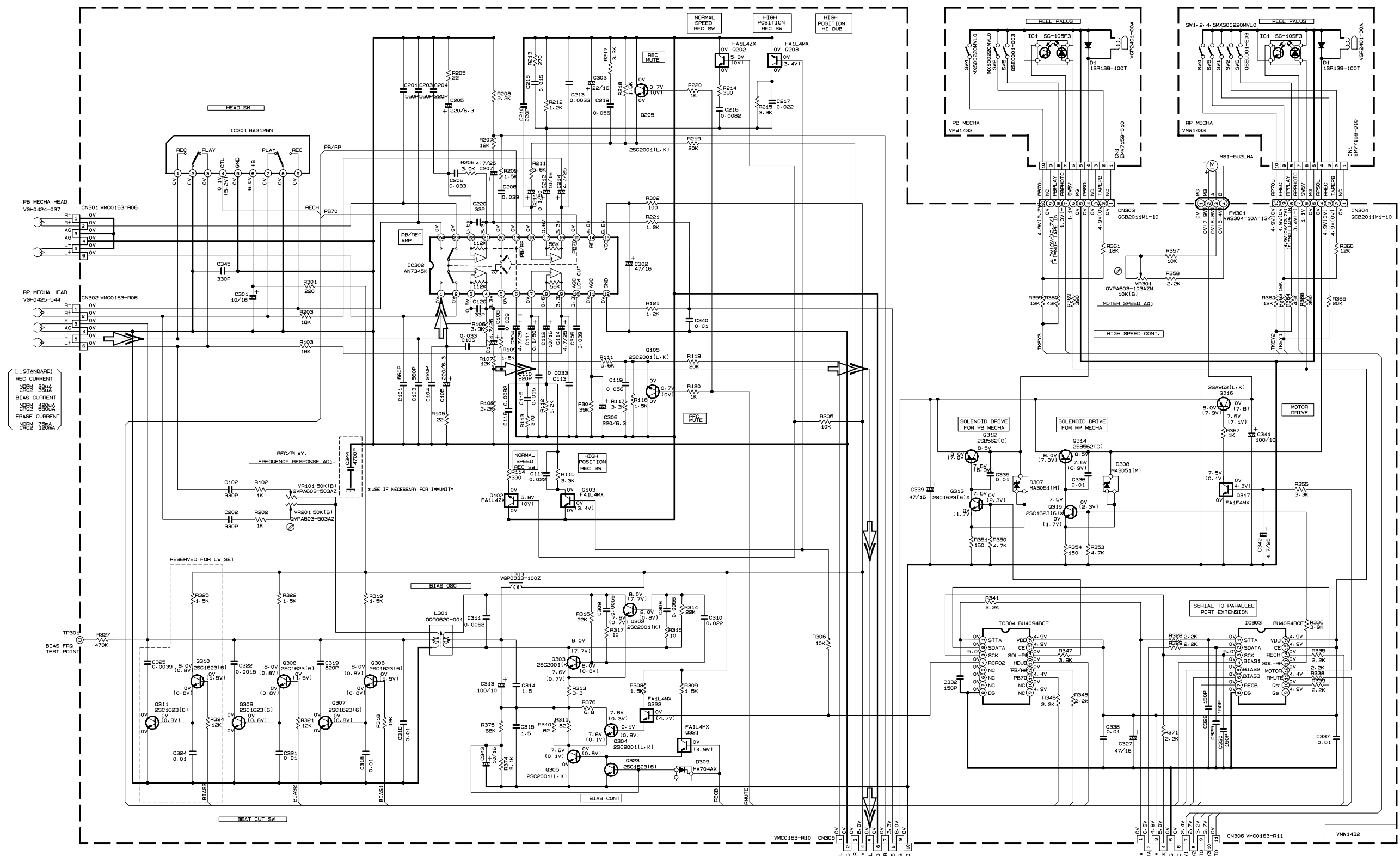
SHEET 2/8

SHEET 4/8



Cassette amplifier & Mechanism control section

5  
4  
3  
2  
1



NOTES

1. VOLTAGES ARE DC-MEASURED WITH A DIGITAL VOLT METER OR OSCILLOSCOPE WITHOUT INPUT SIGNAL. ( ) IS INVERT MODE
2. UNLESS OTHERWISE SPECIFIED ALL RESISTANCE VALUES ARE IN OHM. ALL CAPACITORS ARE CERAMIC CAPACITOR. ALL CAPACITANCE VALUES ARE IN [P+HF]. ALL INDUCTANCE VALUES ARE IN [m+MH]. ALL E. CAPACITORS ARE SHOWN IN THE FORM OF CAPACITANCE ( # ) / RATED VOLTAGE ( V ).

Note  
VDH1033-003PV  
SLC-W5

TABLE 1-DIGITAL TR LIST

PART. NO.	CONSTRUCTION	REF. NO.
FA1F4M		Q317
FA1L4M		Q103/Q203 Q321/Q322
FA1L4Z		Q102/Q202

FROM CN803 OF  
FMB-021-1  
SHEET 2/8

FROM CN412 OF  
FMC-012-1  
SHEET 3/8

TAPE P.B. signal

CD Servo & CD Mechanism control section

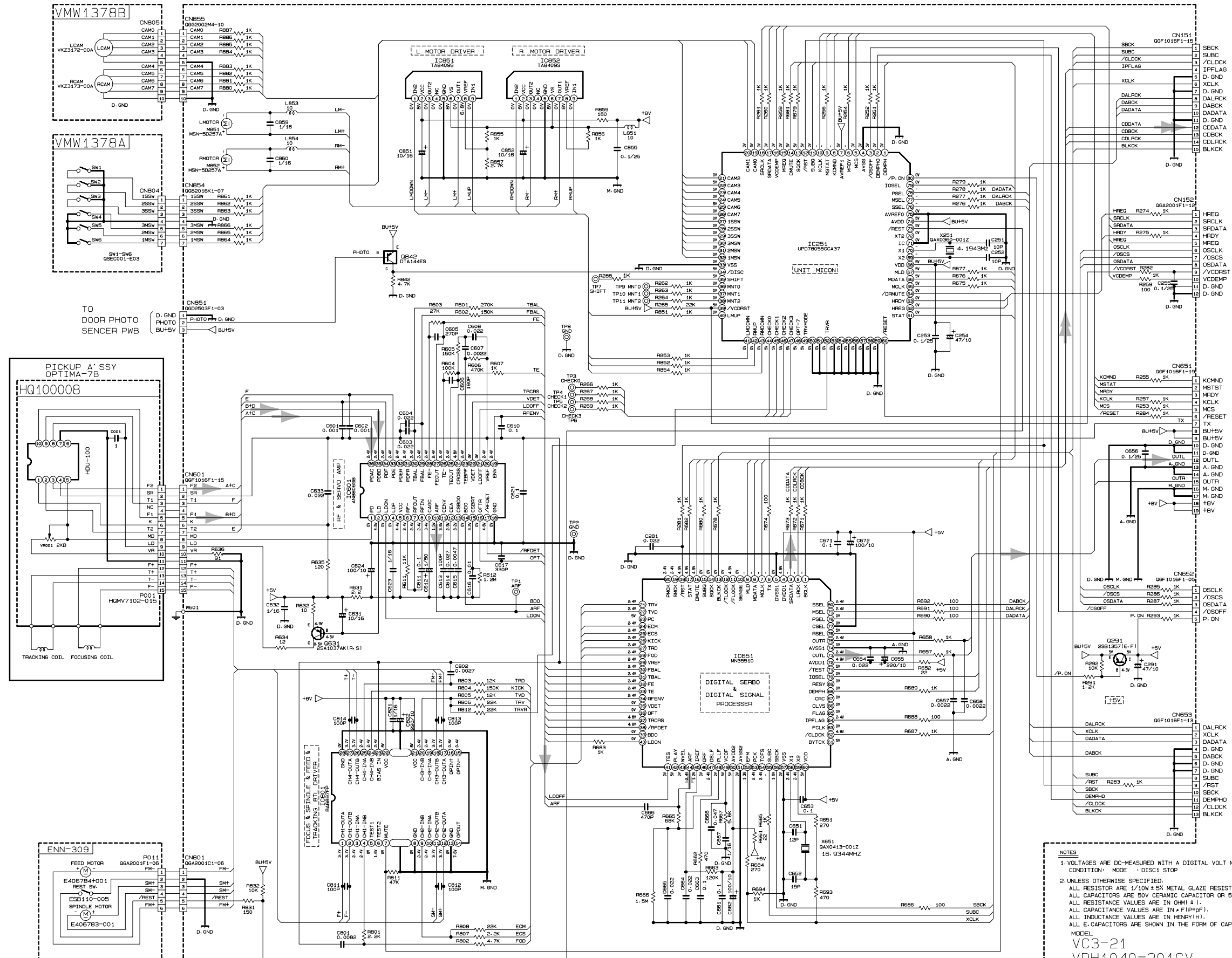
5

4

3

2

1



SHEET 6/8

SHEET 6/8

SHEET 2/8

SHEET 2/8

SHEET 2/8

- NOTES
1. VOLTAGES ARE DC-MEASURED WITH A DIGITAL VOLT METER  
CONDITION: MODE : DISC1 STOP
  2. UNLESS OTHERWISE SPECIFIED:  
ALL RESISTOR ARE 1/10W ± 5% METAL GLAZE RESISTOR.  
ALL CAPACITORS ARE 50V CERAMIC CAPACITOR OR 50V MYLAR CAPACITOR.  
ALL RESISTANCE VALUES ARE IN OHM (Ω).  
ALL CAPACITANCE VALUES ARE IN nF (nF).  
ALL INDUCTANCE VALUES ARE IN HENRY (H).  
ALL E-CAPACITORS ARE SHOWN IN THE FORM OF CAPACITANCE (F) / RATED VOLTAGE (V).

MODEL  
VC3-21  
VDH1040-201CV

➔ CD/AUDIO signal  
➔ VIDEO/CD signal

EMW10729

Video CD section

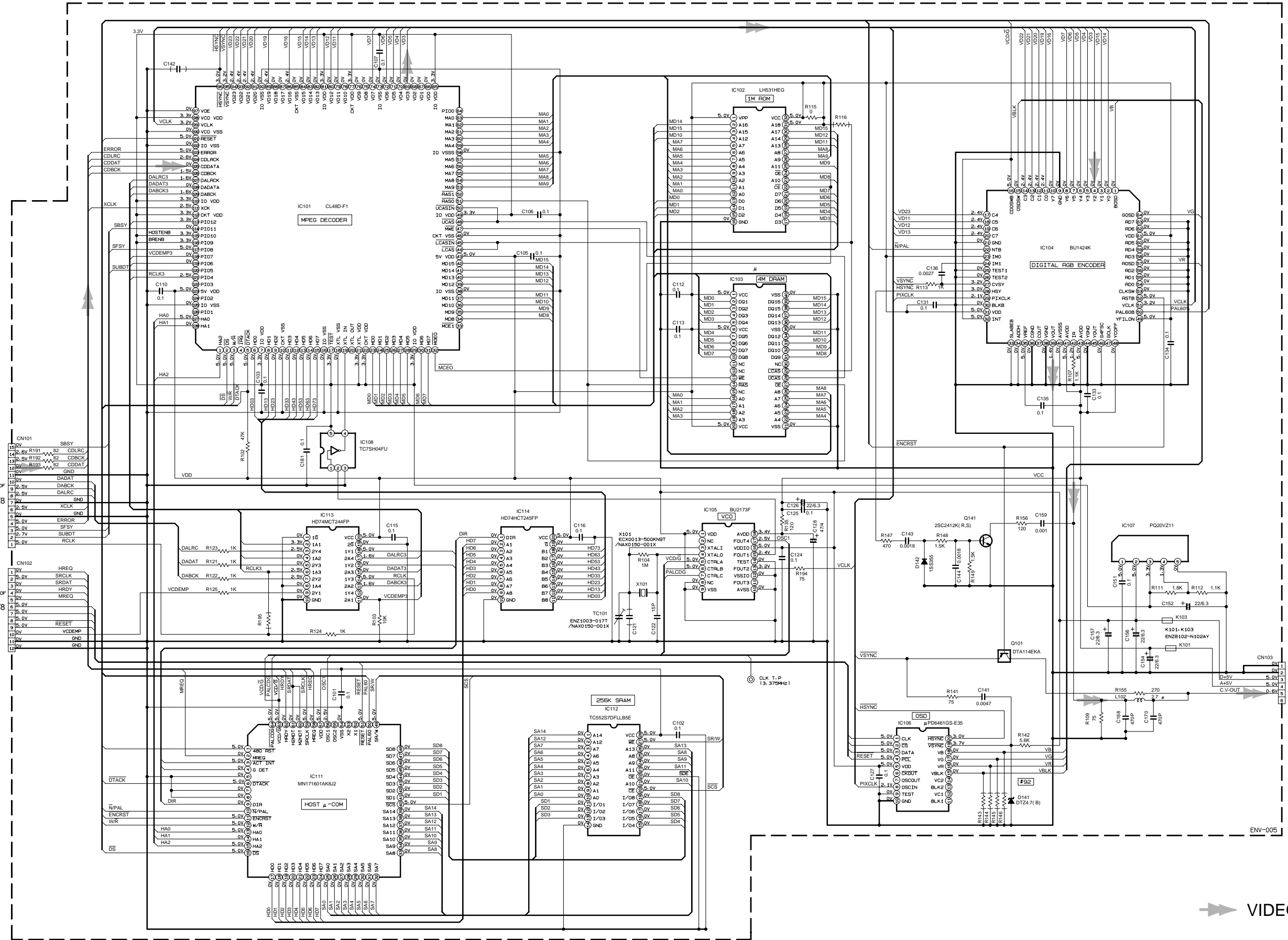
5

4

3

2

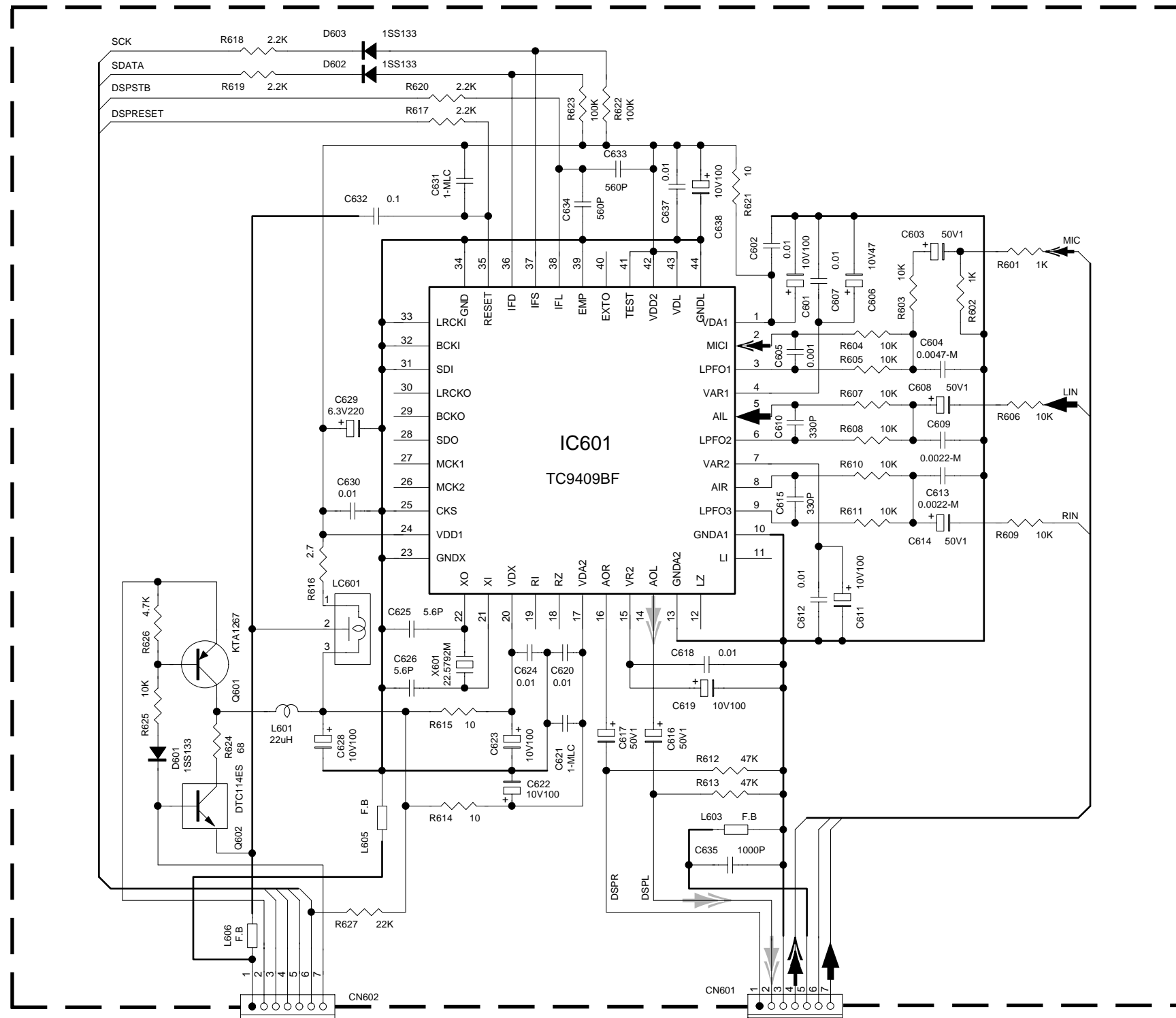
1



VIDEO/CD signal

SHEET 6/8

■ DSP section



D.GND  
5V  
SCK  
SDATA  
DSPSTB  
DSPRESET  
FTU  
SHEET 2/8

DSPR  
DSPL  
A.GND  
MIC  
A.GND  
A.GND  
RIN  
LIN  
SHEET 2/8

- MIC signal
- DSP signal
- MAIN signal

5

4

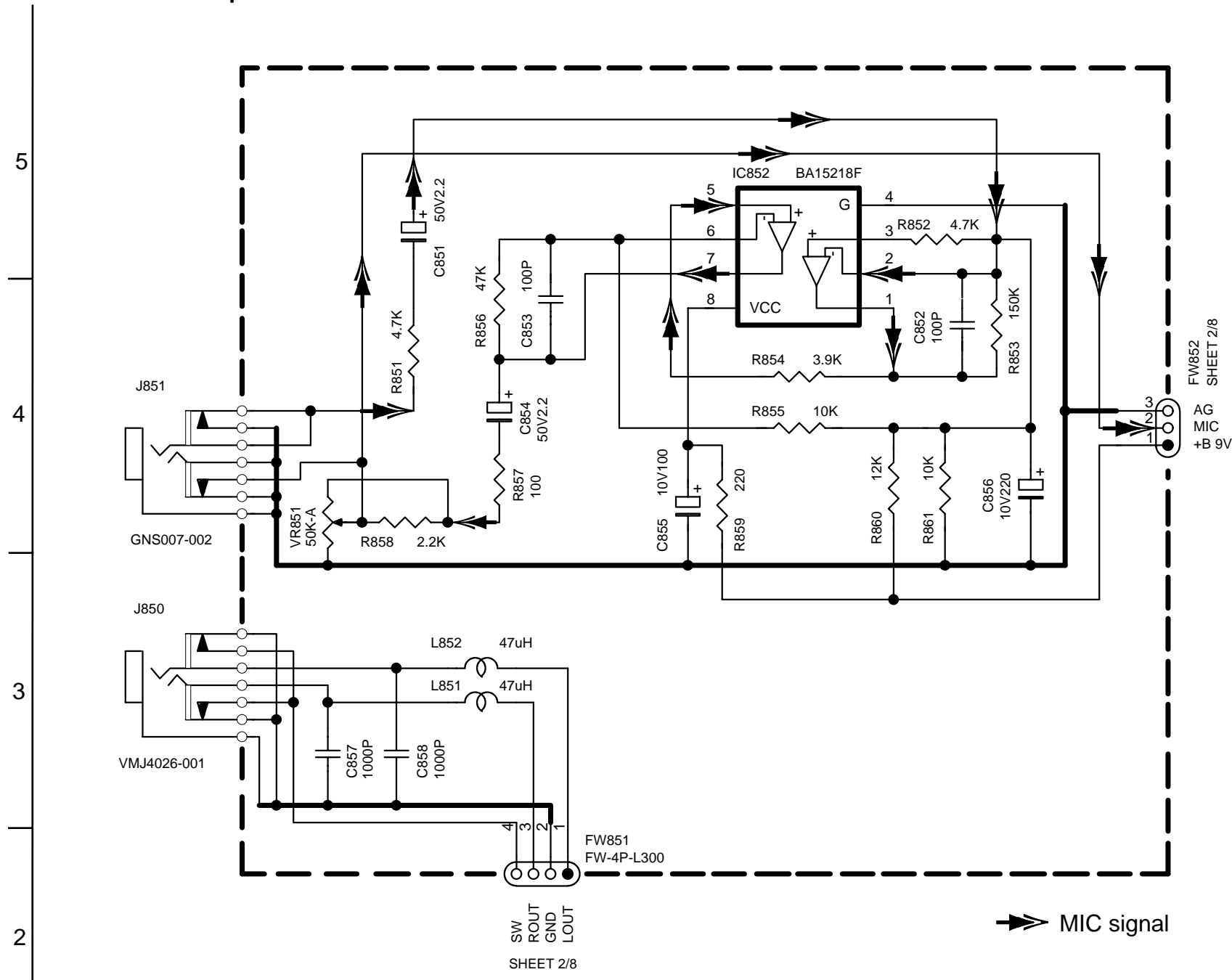
3

2

1



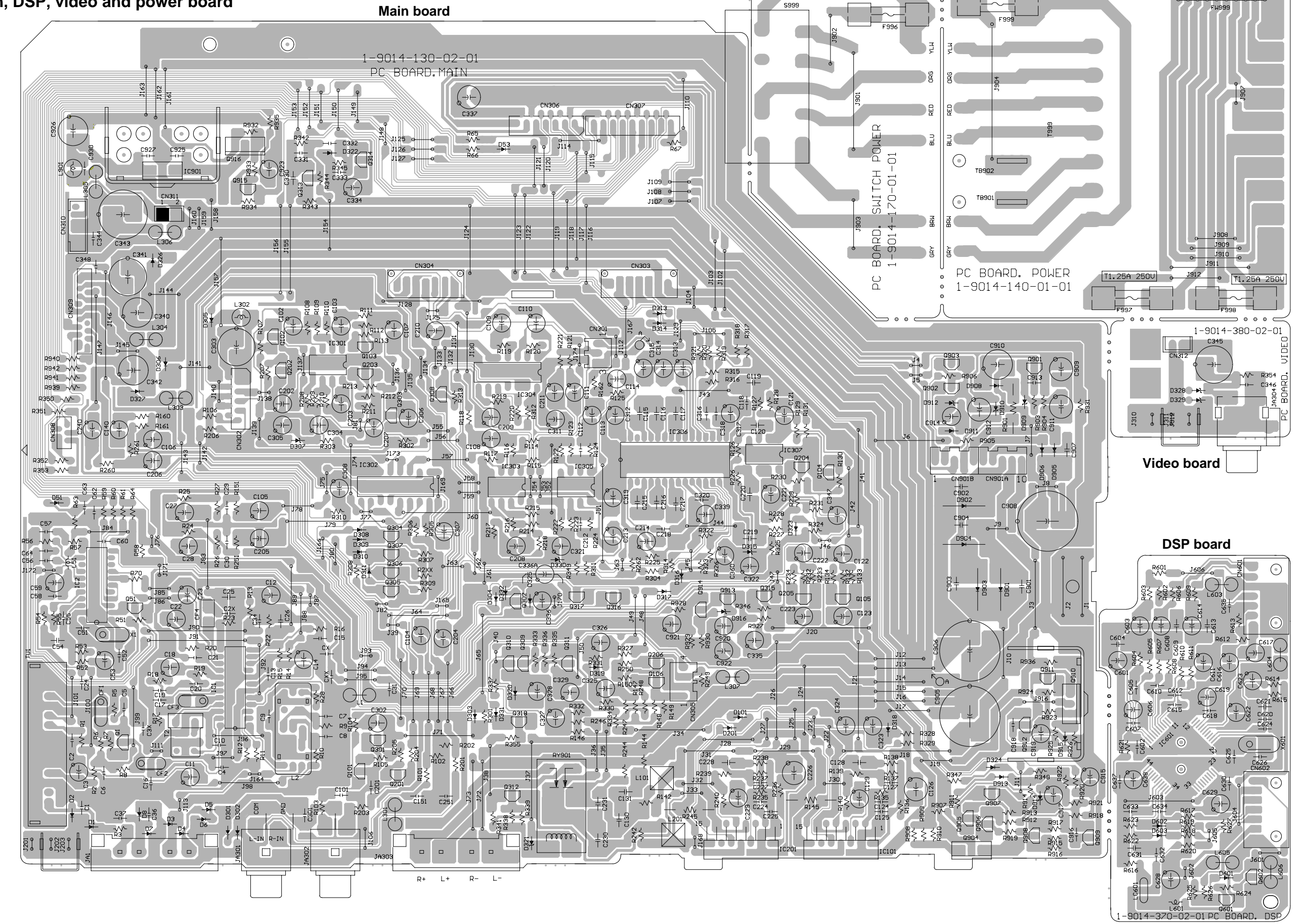
■ MIC / headphone section



# Printed circuit boards

■ Main, DSP, video and power board

5  
4  
3  
2  
1



A B C 2-10 D E F G H

■ Display, Multi-control & switch board

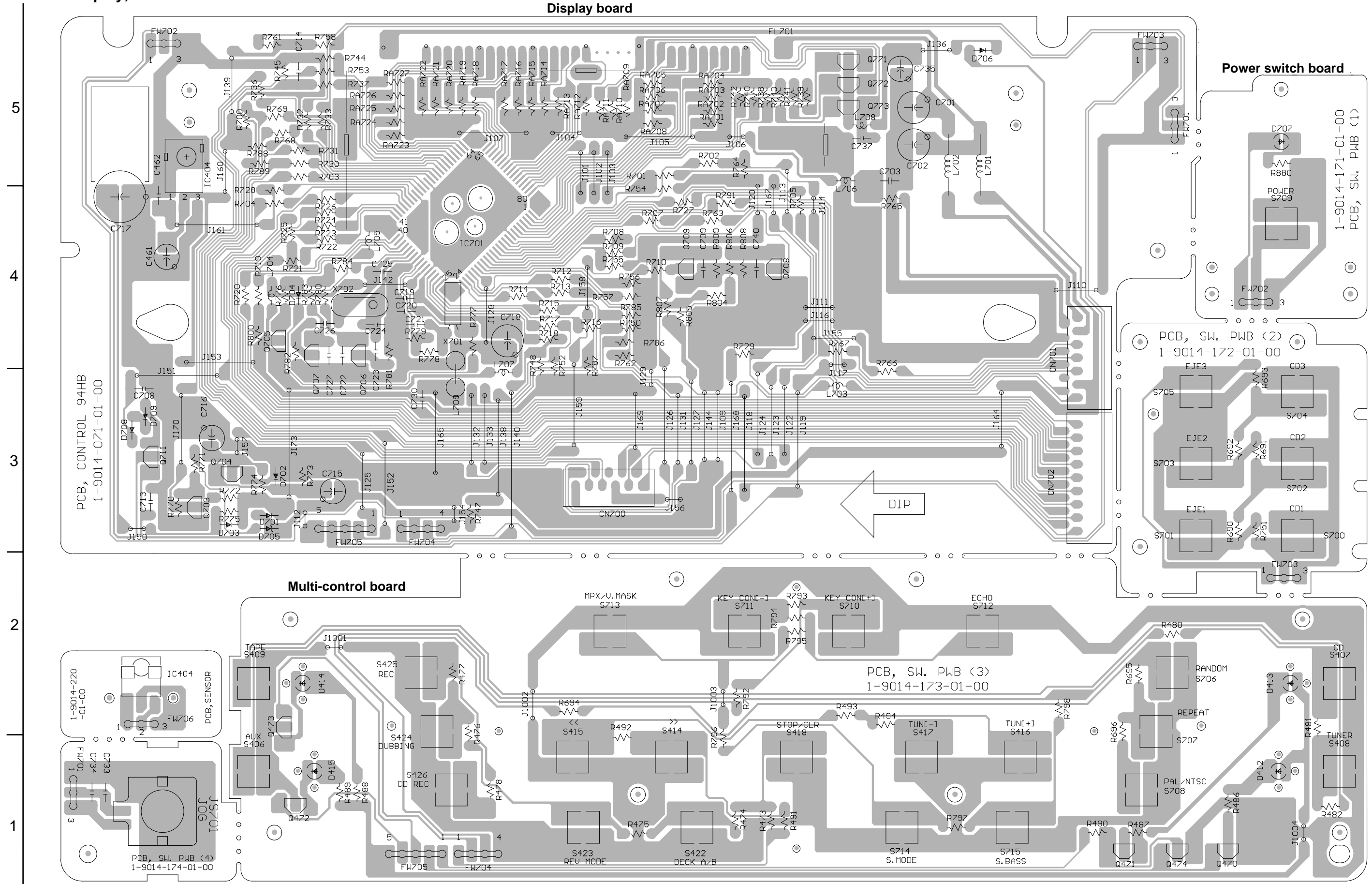
Display board

Power switch board

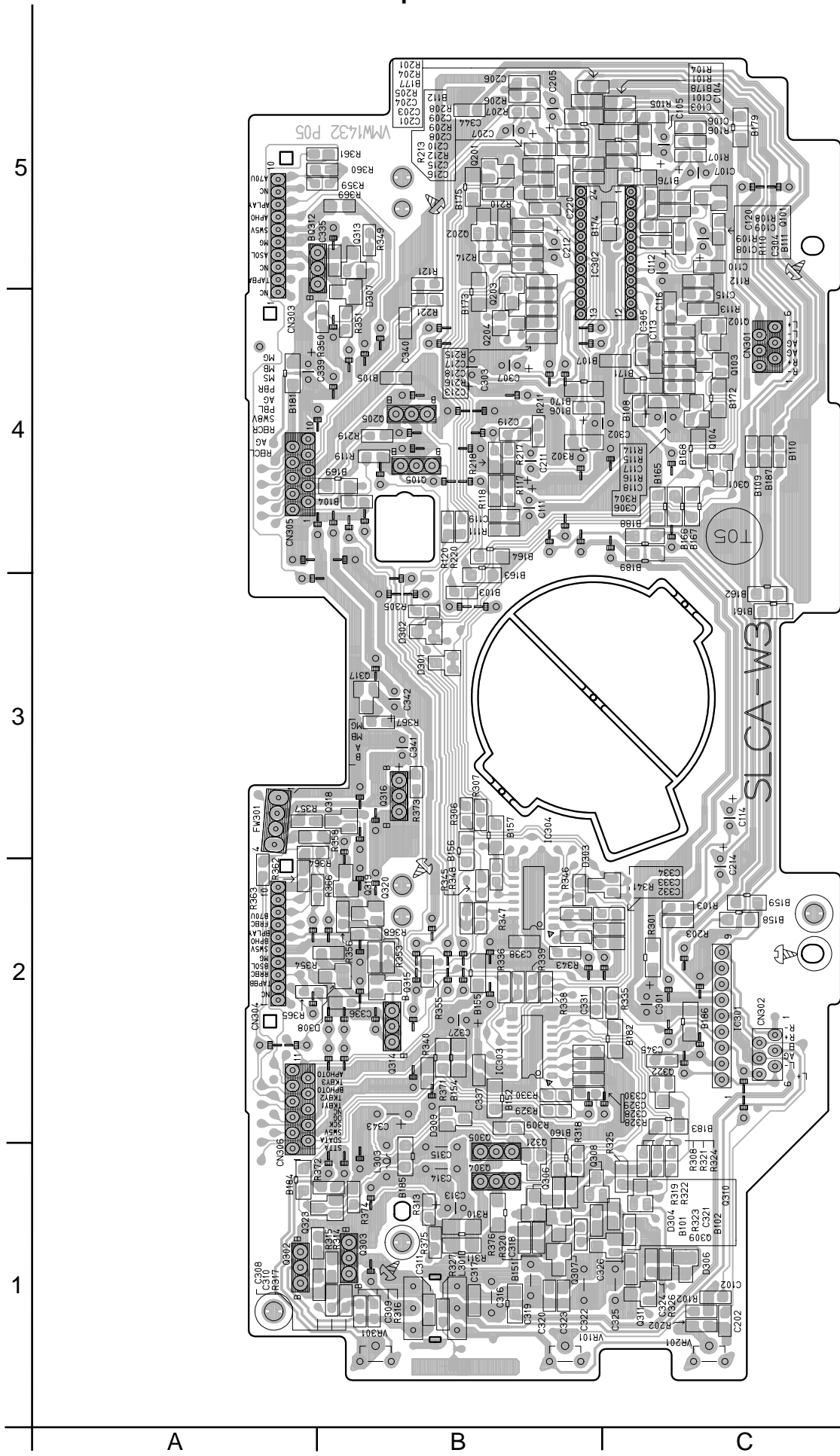
Eject switch board

Multi-control board

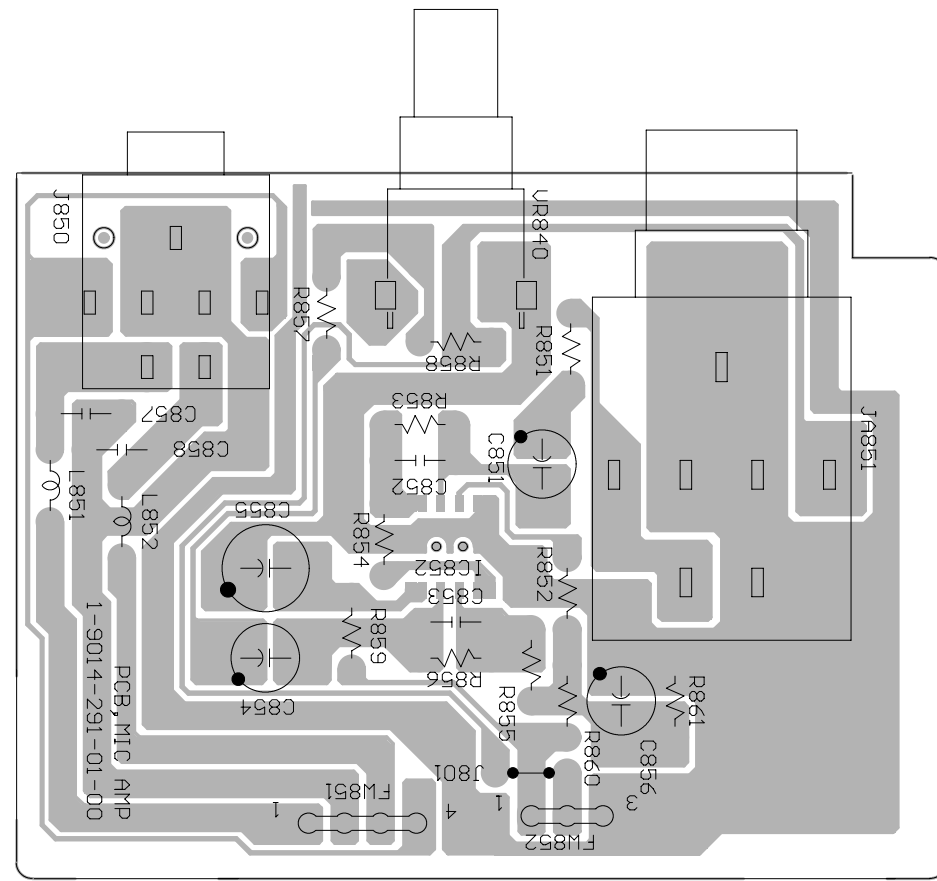
Volume board



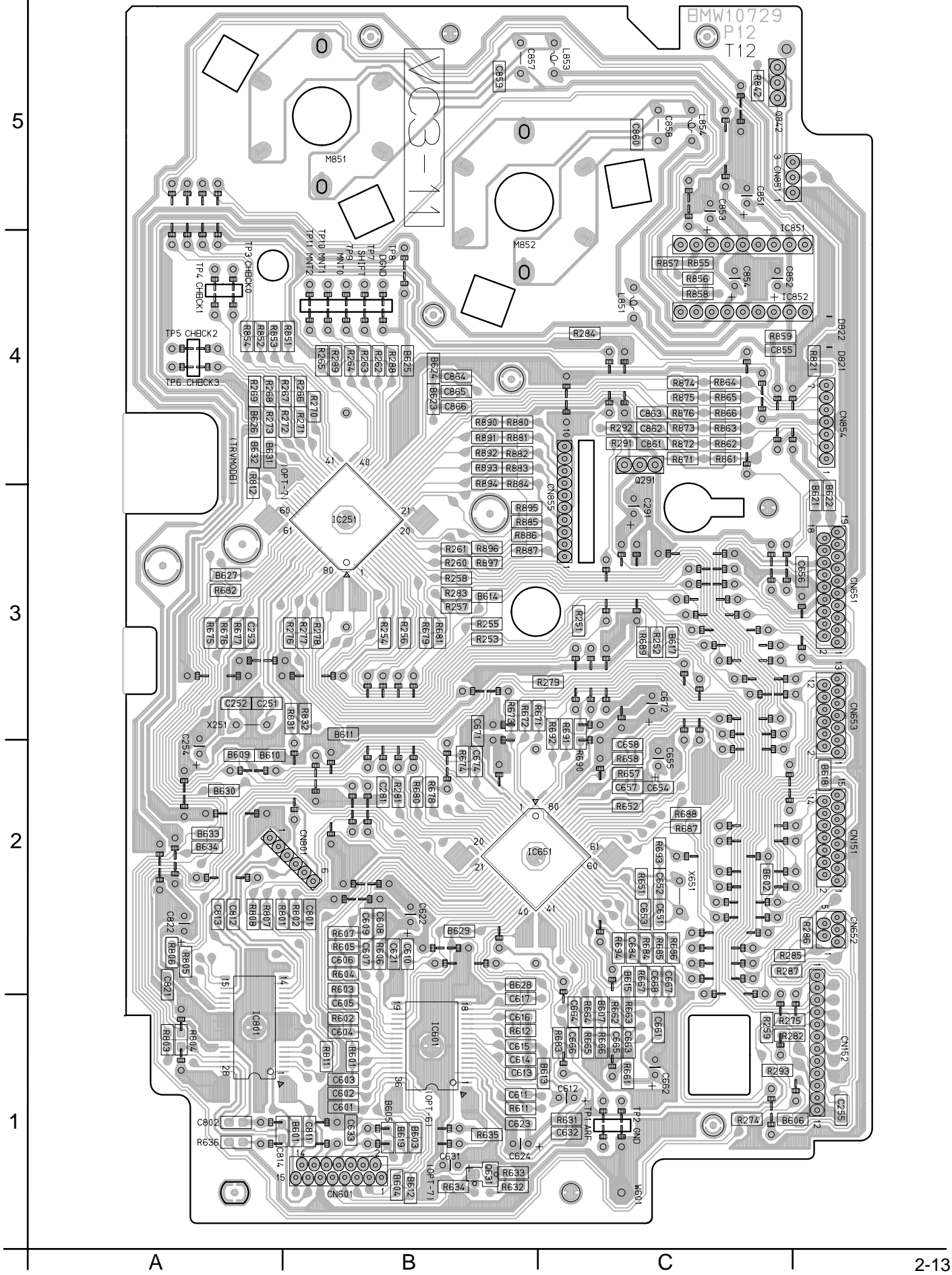
■ Cassette mechanism amplifier board



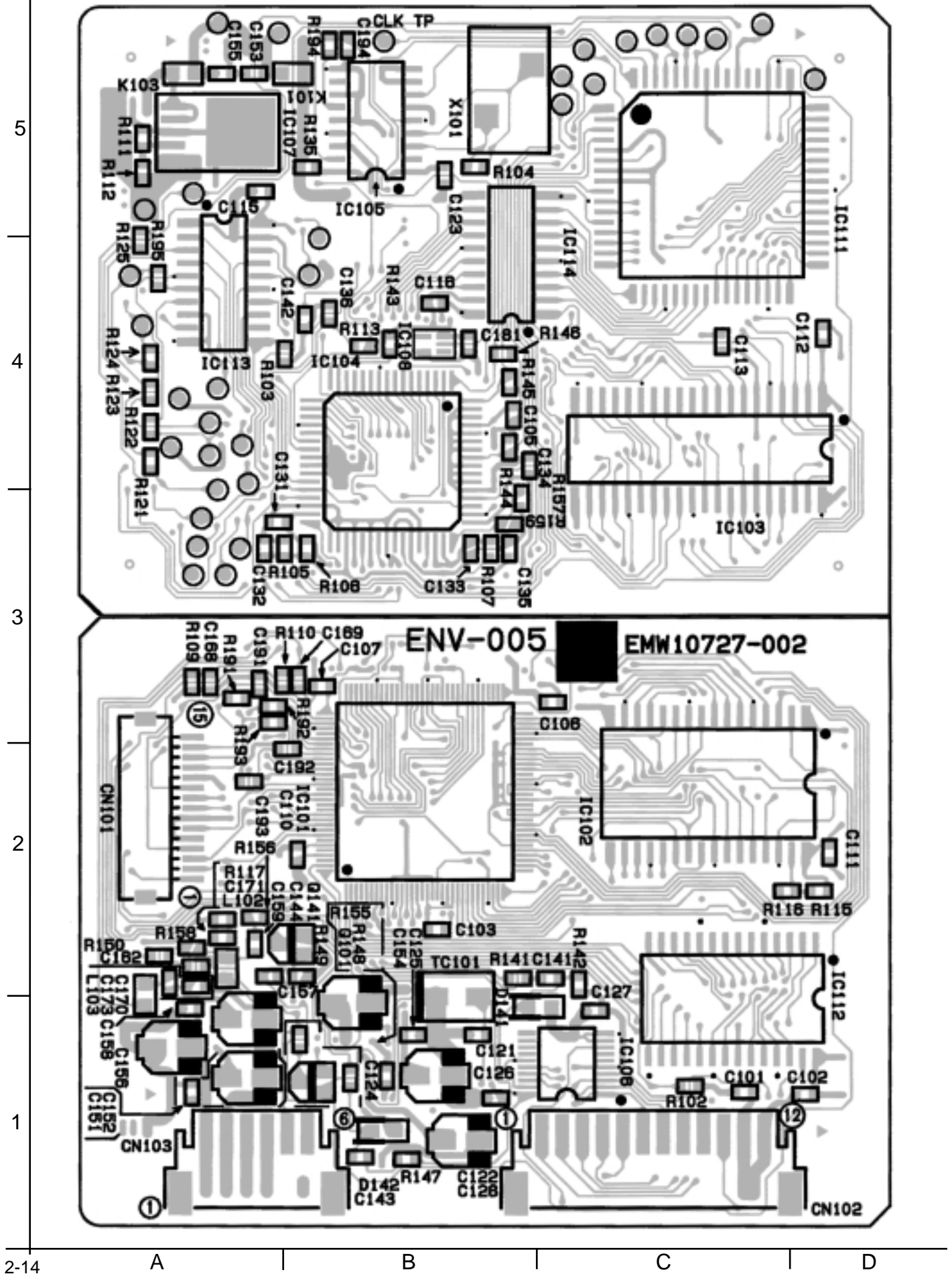
■ MIC / headphone board



■ CD Servo control board

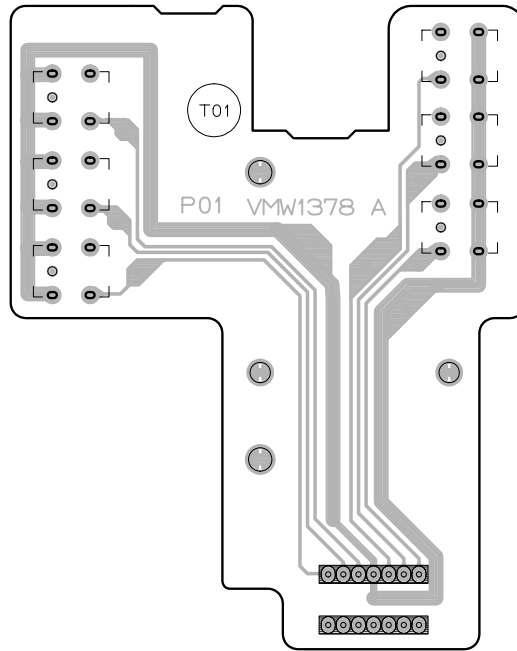


■ Video CD board



■ CD Tray section switch board

5

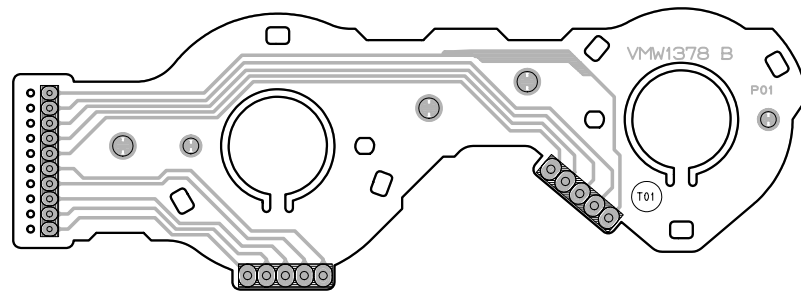


4

3

■ Cam switch board

2



1

A

B

C

**-MEMO-**